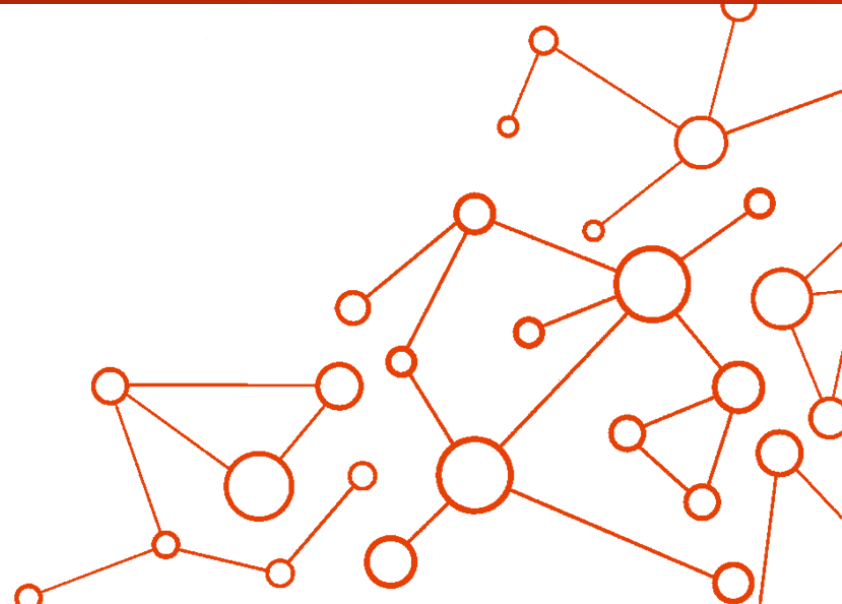
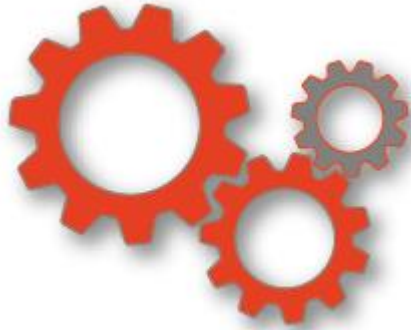


**Are the vibration sensor and cable connected properly?**

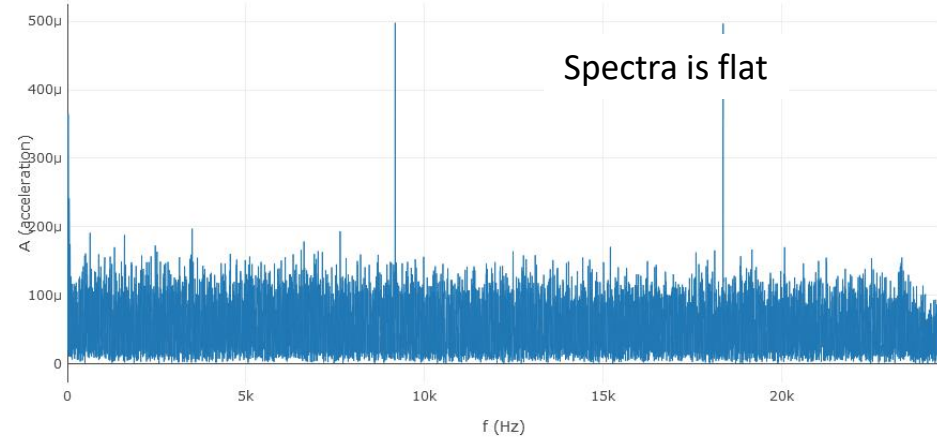
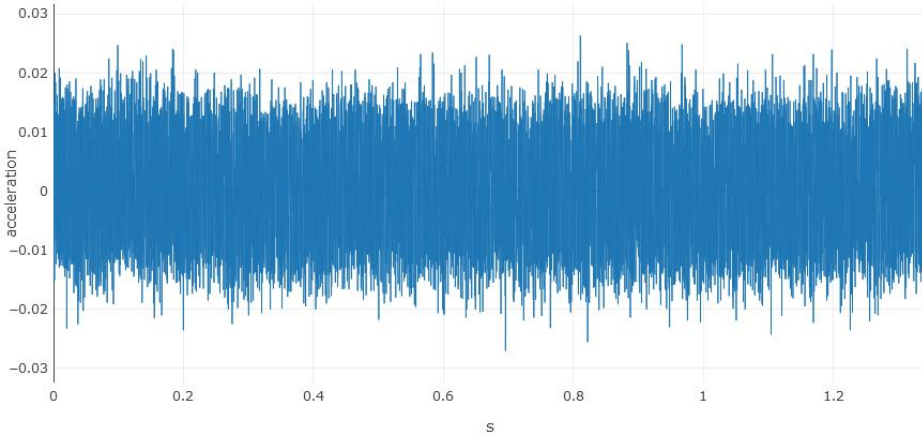


1. Properly connected sensor and cable, no vibrations from equipment
2. Non-working sensor connected
3. Cable with no sensor connected
4. No cable nor sensor connected

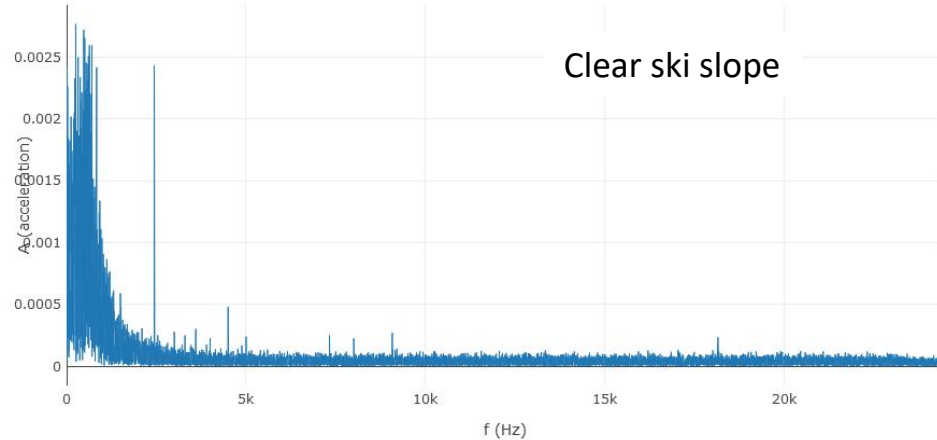
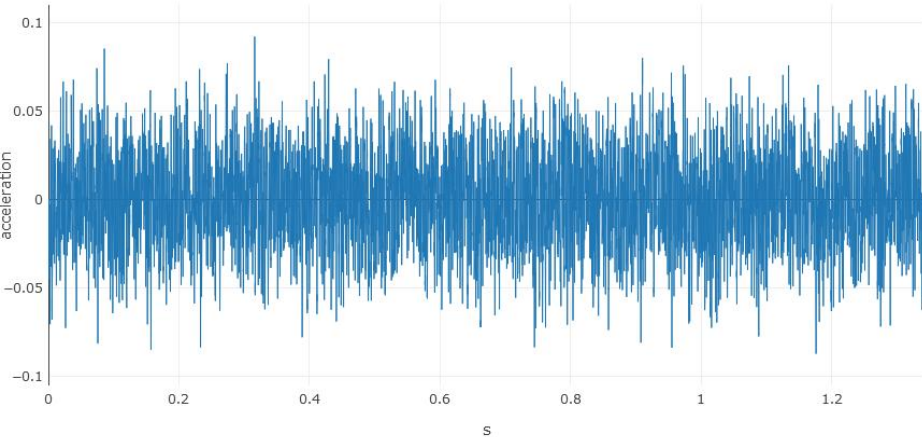
Cable in all examples was 5m screened cable.

# Example

Properly connected sensor and cable, no vibrations from equipment

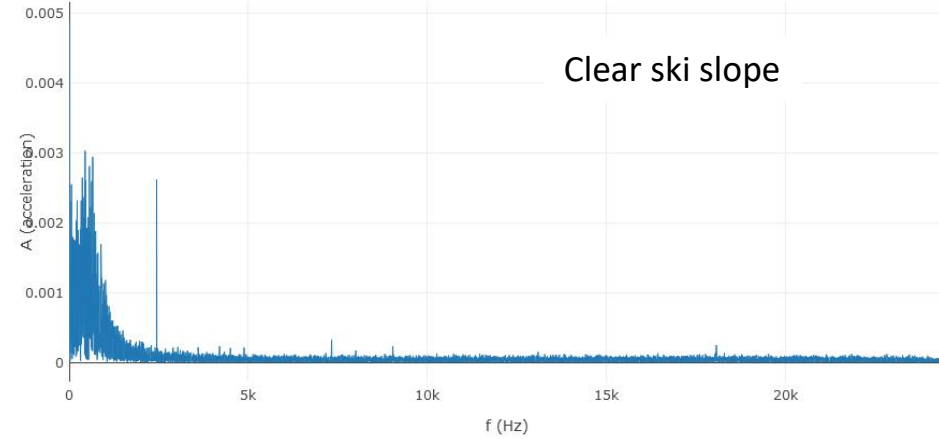
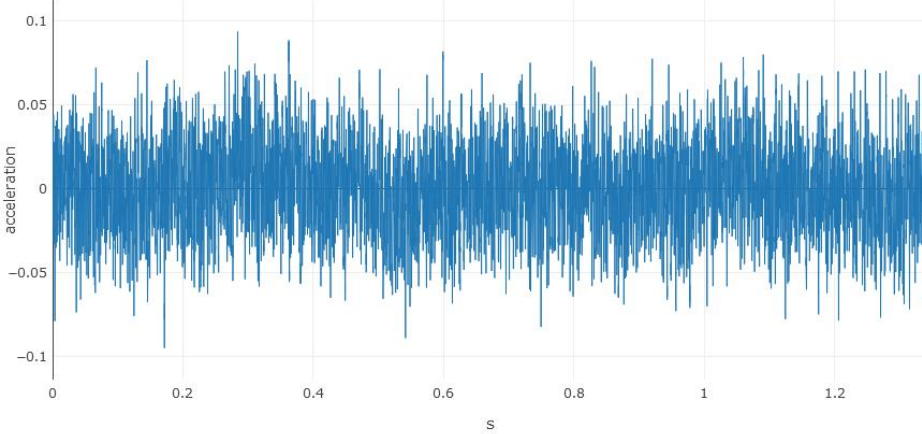


Non-working sensor connected



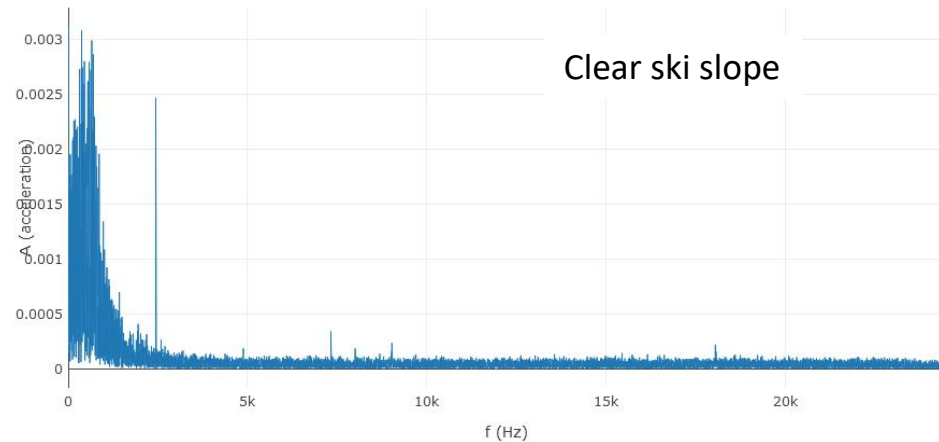
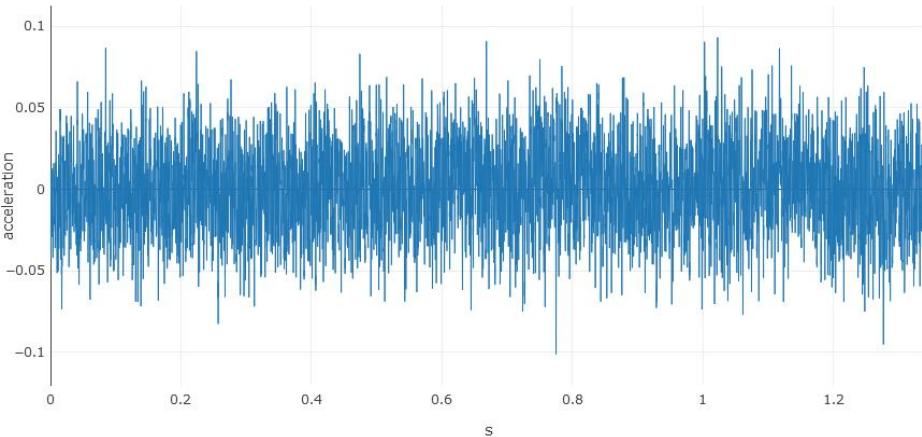
# Example

## Cable with no sensor connected



Clear ski slope

## No cable nor sensor connected



Clear ski slope

Thank you.



Panu Kinnari  
COO

panu.kinnari@distence.fi  
+358 41 549 6349

Sinikalliontie 18 B  
FI-02630 Espoo, FINLAND  
[www.distence.fi](http://www.distence.fi)

